



Canlan M200

QUICK START GUIDE

May 2015

FC CE
ICES-003

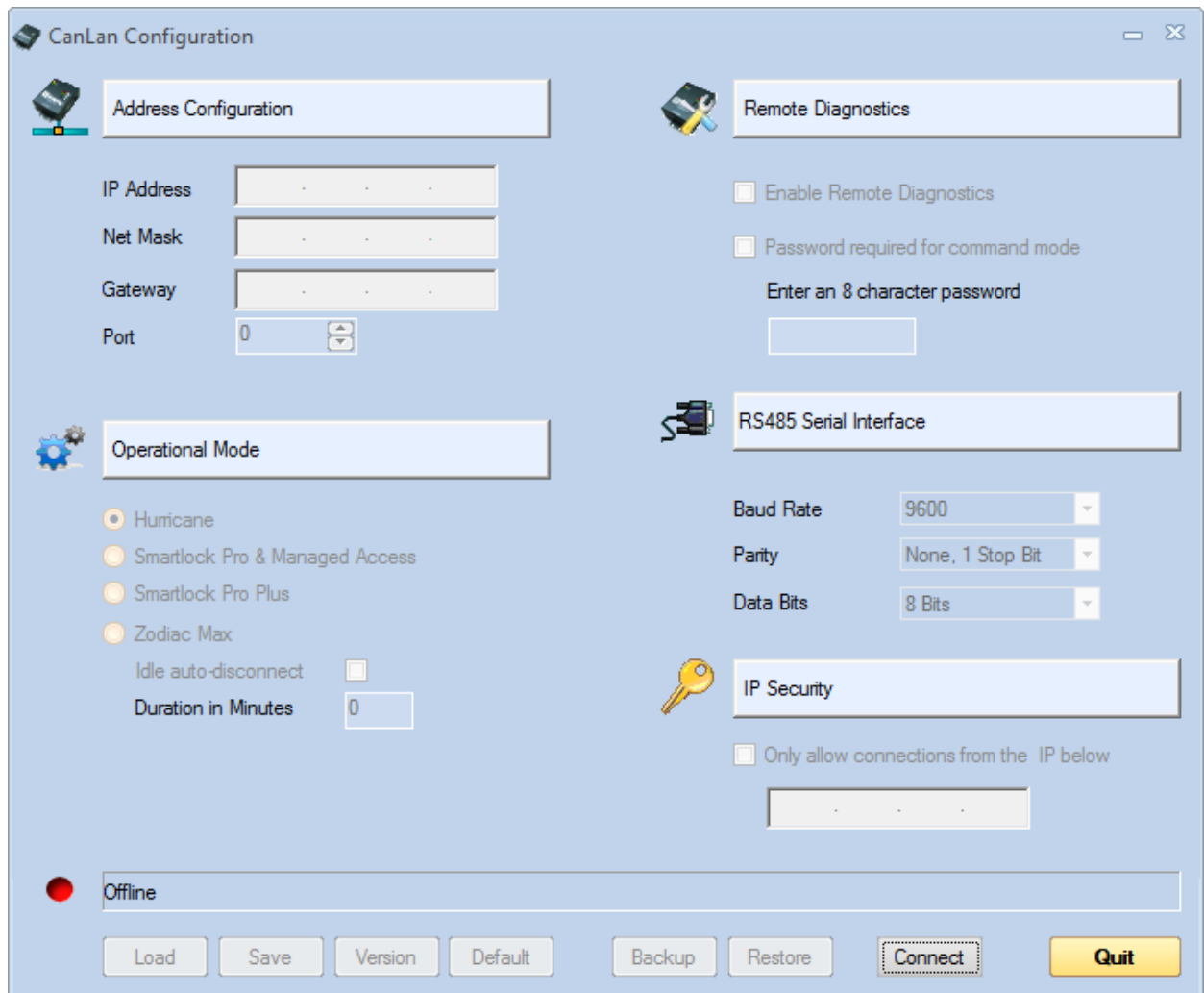
 **Cansec**
Systems Ltd.
Cutting edge simplicity

Connect

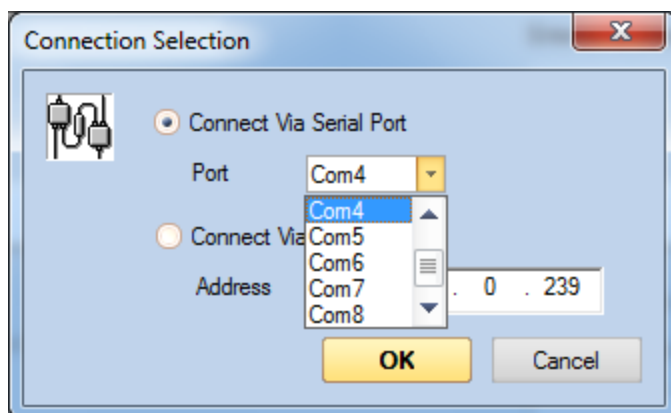
1. Install the USB driver from the included CD. The driver and the configuration software may also be downloaded from www.cansec.com/downloads.
2. Install and run the Canlan M200 configuration software.
3. Connect the Canlan M200 to your PC using the USB cable provided.

NOTE: *The cross-over network cable provided may be used instead of the USB cable. Refer to the Canlan M200 Installation Manual for important connection information.*

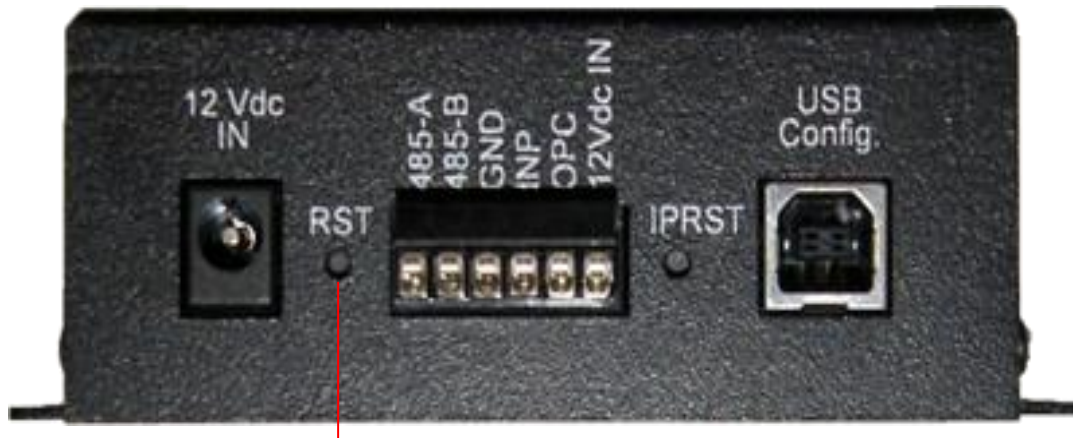
4. Verify the COM port number used by the Canlan M200 by going to:
Control Panel > System > Hardware > Device Manager->Port. Example “USB Serial Port (COM4)”.
5. From the Canlan M200 configuration software, click the **Connect** button.



6. Select **Connect via Serial Port** and choose the appropriate COM port from the drop-down menu.

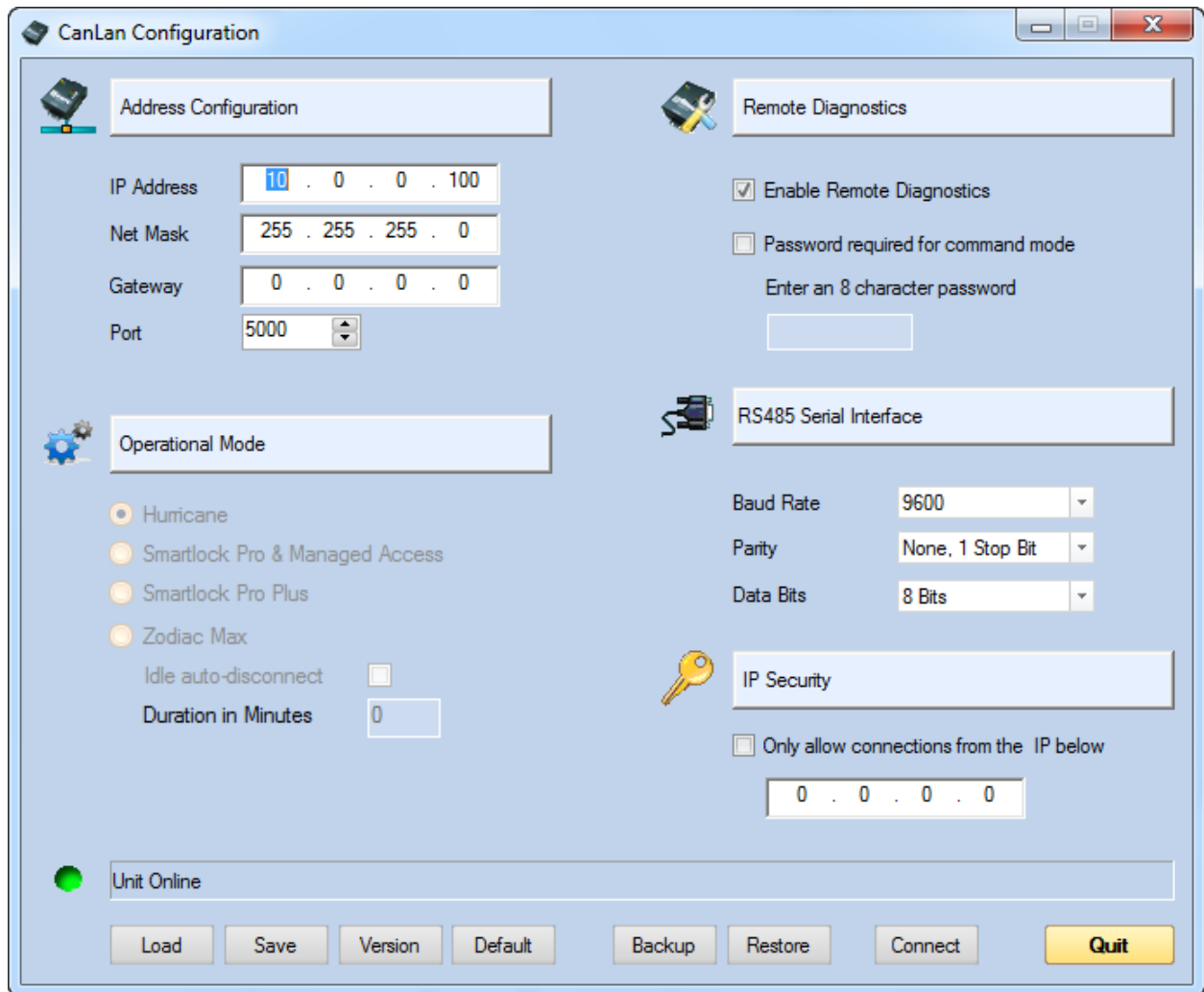


7. Power on the Canlan M200 using the AC-DC adaptor provided. If the Canlan M200 is already powered on, use a pin to press and release the reset button in the reset pin hole.



Device Reset Button

8. Press **OK** within 20 seconds. You should see the message **Unit Online** along with all default configuration parameters.



Troubleshooting

If a connection cannot be established, you will see the message **Unit Offline**.

1. Make sure you are using the right COM port number.
2. Unplug the AC-DC adaptor and plug it back in again or use a pin to press and release the reset button if it's already powered on.
3. Wait for the Cfg/Err LED to come on then click the **Connect** button to retry the connection.
4. For more troubleshooting tips, see the *Canlan M200 Installation Manual*.

Configure

1. **Address Configuration** - enter the IP address, subnet mask, default gateway, and port number provided by your network administrator.
2. **Operational Mode** - select your access control system.
NOTE: Idle auto-disconnect is enabled by default for SmartLock Pro/SMA, Zodiac Max and SmartLock Pro Plus with a value of 1.
3. **Remote Diagnostics** - select remote diagnostics and enter an optional 8-digit password.
4. **RS485 Serial Interface** – These settings are set accordingly when the operational mode is selected. Maestro and SmartLock Pro/Connect share the same default settings. Zodiac Max also shares the same settings except the baud rate is set to 38400. The default settings for Maestro and SmartLock Pro/Connect are as follow:
Baud Rate: 9600
Parity: None, 1 Stop Bit
Data Bits: 8 Bits
5. IP Security is optional. Select the checkbox “Only allow connections from the IP below” and enter the IP address that is allowed to connect to this Canlan for communication. Leave the checkbox unchecked if IP Security is not used.
6. Click **Save** if any changes were made.
7. Optionally, click **Backup** to back up the configuration to a binary file for future restoration. The file will be saved in the same folder as the Canlan configuration software.