



MAP1 Enrollment Reader

INSTALLATION MANUAL

September 2017



Table of Contents

INTRODUCTION	3
KEY FEATURES	3
SPECIFICATIONS	3
ENROLLMENT READER - CA-MER100	4
• USB Connection:.....	4
• Windows 7:.....	5
• Windows 8, 10:.....	5
CREDENTIAL ENROLLMENT	7

Introduction

The MAP1 Enrollment Reader model CA-MER100 has been designed for the rapid enrollment of individual proximity access card into Cansec's First Access software program running on a host computer. The MAP1 Enrollment Reader is connected to a host computer via a USB connection. Enrollment Reader power is also obtained via the USB connection. The MAP1 Enrollment Reader contains a Cansec CA-PROX1 reader which allows for the reading of 125 KHz proximity cards. Up to 64 bits of Wiegand data can be enrolled.

Key Features

- USB connectivity for power and data
- 125Khz reader
- Simplifies data entry into Cansec First Access software
- USB cable included

Specifications

Power Requirements

- Uses USB port power: 110 mA
- Dimensions: 2 3/4 x 4 1/4 x 1 3/4 (70mm x 108mm x 44mm)
- Weight: 3.2 oz (90 grams)

Specifications subject to change without notice.

Enrollment Reader - CA-MER100



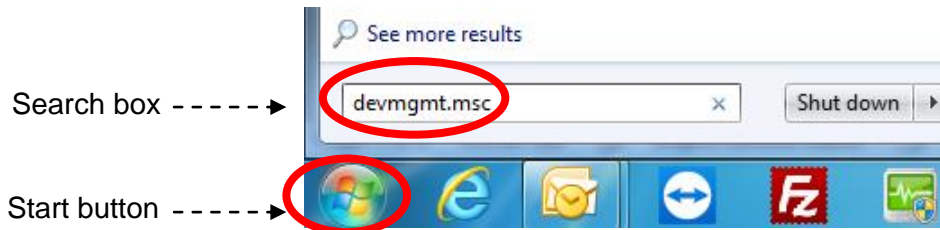
USB CONNECTION:



1. Install the USB driver from **First Access** software installation package or download the driver from www.cansec.com/downloads.
2. Insert the USB cable, connected to the enrollment reader, to the PC.
3. Go to Windows' Device Manager. *See instructions below.*

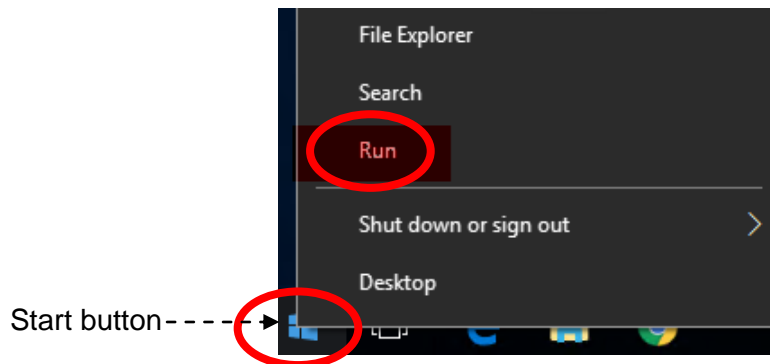
WINDOWS 7:

Click on **Start** button  and type DEVMGMT.MSC in the search box as seen in the image below and hit **Enter** key to launch the **Computer Management** window.

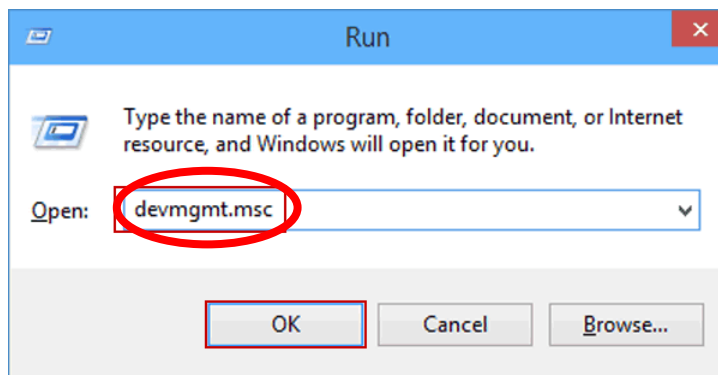


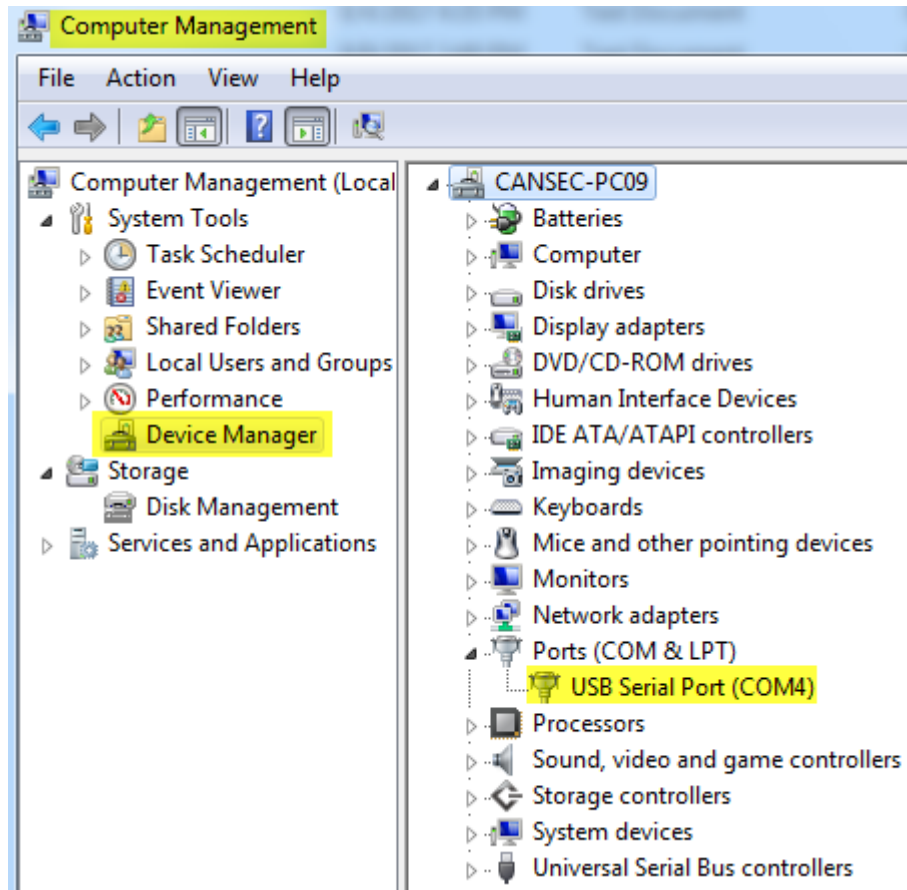
WINDOWS 8, 10:

Right click on the **Start** button  and select **Run**.

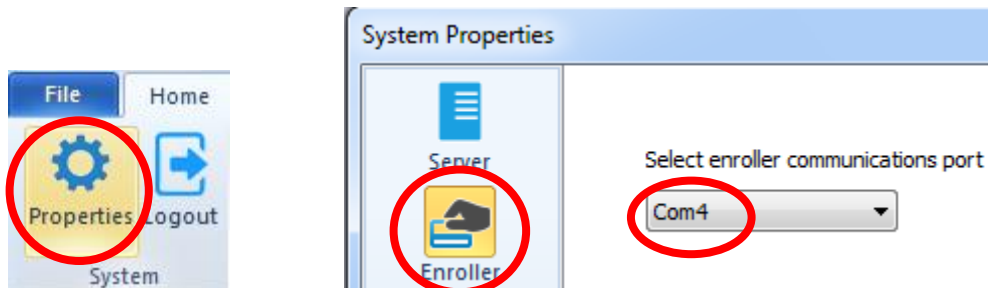


Type DEVMGMT.MSC in the run box and hit **Enter** key to launch the **Computer Management** window.



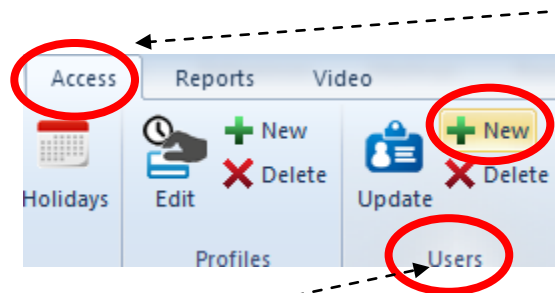


4. Select Device Manager.
5. On the right panel, select Ports and one of the ports will appear as USB Serial Port (COMXX) where XX can be 1 or 10 or 17 etc... In this example, the communication port is 4 (COM4)
6. In the **First Access** software select Properties from the **Home** menu. Select **Enroller** and select the COM port accordingly.

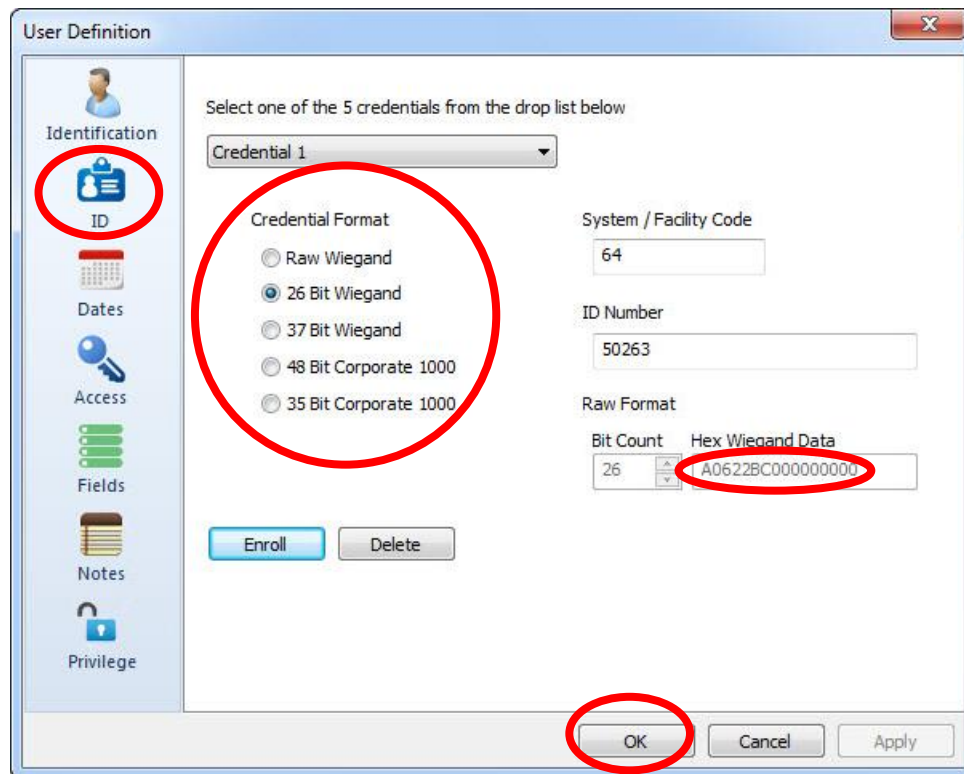


Credential Enrollment

1. In the **First Access** software. Select **Access** menu



2. Under **Users** select **New** to enroll a new user. Select **ID**. Click **Enroll** button and present a credential e.g. card or fob. Data will appear in the 'Hex Wiegand Data' area. The credential format will be automatically selected based on encoded format of the card. For unlisted bit format, **Raw Wiegand** will be selected.



3. Proceed to fill in other information e.g. Name, Date of Activation etc... and click **OK**.