



# Webster MAPMINI

## QUICKSTART GUIDE

November 2021

# Table of Contents

- Static IP Address Configuration Tool..... 3
- Default Factory Static IP Address Configuration..... 4
- USB IP Address Configuration Tool..... 7
- Webster Login ..... 12

Copyright © 2021 Cansec Systems, Ltd.

## CAUTION: EMERGENCY LOCKDOWN

Emergency lockdown functions must operate totally independent of the access control system and must not rely on operation of card readers, access control panels, communications networks, communications devices or host software. Cansec accepts no responsibility for direct or consequential damages resulting from the failure of emergency lockdown functions which are dependant in any way on the operation of card readers, access control panels, communications networks, communications devices or host software.

This section describes the steps to configure the Webster system. These steps are typically done by the installation company or system administrator. *Please use one of the methods below to set a static IP address to your controller*

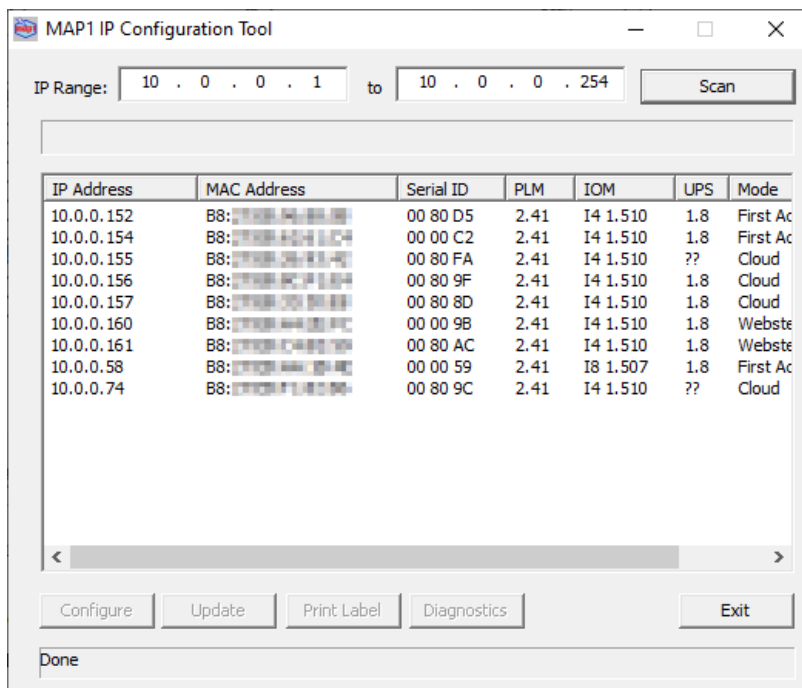
## STATIC IP ADDRESS CONFIGURATION TOOL

1. Obtain the static IP address information from IT personnel.
2. Power up the MAPMINI controller. Plug a network cable from the network switch into the MAPMINI controller. By default, the MAPMINI will acquire a dynamic IP address from a DHCP server available in the network.

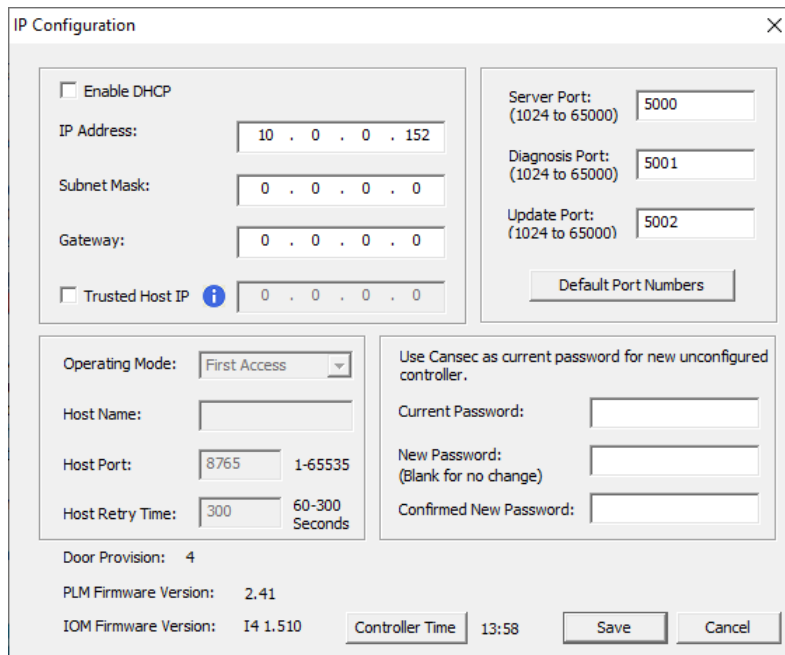
**Note:** *If there is no DHCP available, see **Default Factory Static IP Address Configuration** section for instructions to reset the MAPMINI controller to a static IP address.*

3. Install and launch **MAP1 IP Configuration Tool**. Click **Scan** button.

**Note:** **MAP1 IP Configuration Tool** can be downloaded from here <https://www.cansec.com/downloads/category/232-software.html>



4. After the scan has finished, select the controller with Webster mode and click **Configure**. Unselect **Enable DHCP** then enter the new static IP address information obtained from IT personnel.

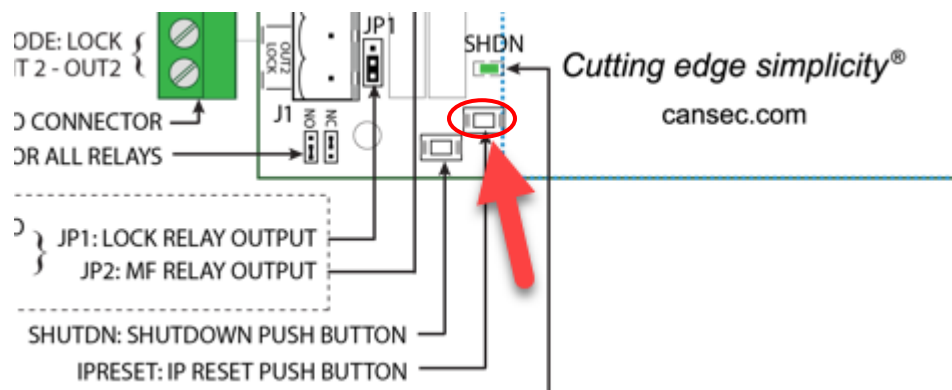


5. The default current password is **Cansec**. Enter the current password, the new password and the password confirmation and click **Save**. The MAPMINI controller will be rebooted with the new static IP address.

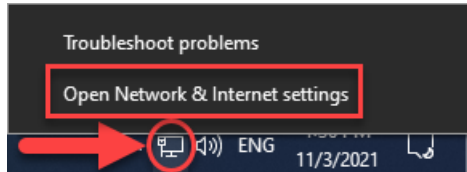
## DEFAULT FACTORY STATIC IP ADDRESS CONFIGURATION

If you don't have a USB flash drive then follow the steps below to temporary set the controller to the default factory static IP address of 10.0.0.101

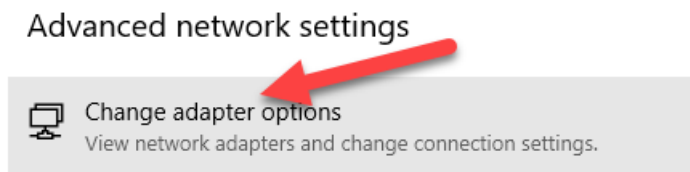
1. Press and hold the IP RESET button in the pressed state. After approximately 3-5 seconds the MAPMINI controller will emit a continuous beep for approximately 3 seconds. Keeping holding the button in the pressed state until the beeper stop beeping then release the button.



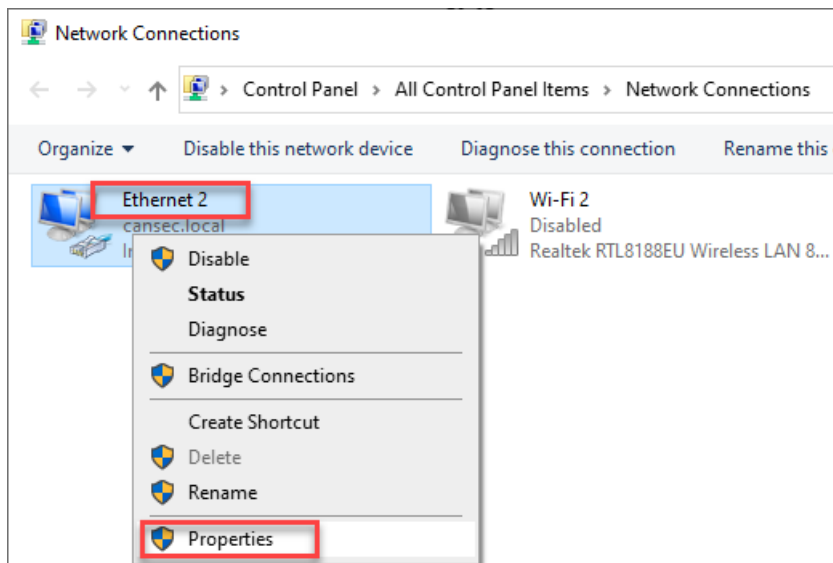
- The MAPMINI controller will be reset and reboot with a default factory static IP address of 10.0.0.101.
- Insert one end of your Ethernet cable (RJ45) to your computer and the other end of the cable to the MAPMINI controller.
- Right click on the network icon from the Notifications Area at the bottom right corner of your screen and select Open Network & Internet settings



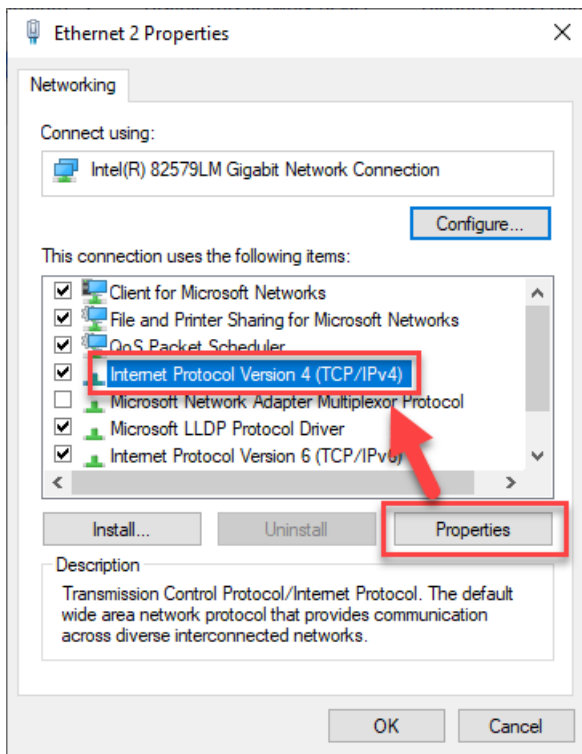
- Under Advanced network settings select Change adapter options



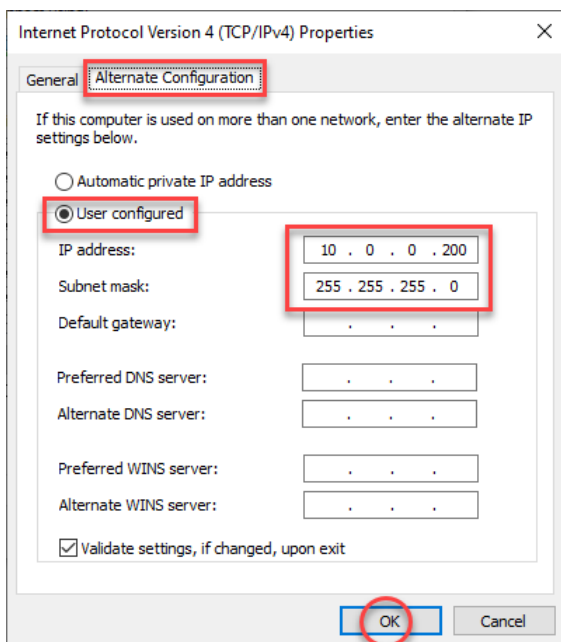
- Right click on your network adapter, in this example it's Ethernet 2, and select Properties.



- Select Internet Protocol Version 4 (TCP/IPv4) and select Properties button.

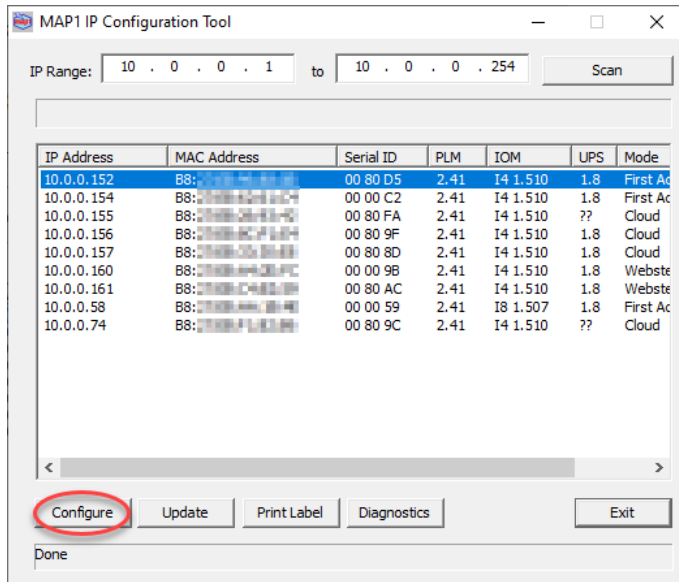


8. Select Alternate Configuration and select User configured then enter the IP address of 10.0.0.200 followed by the Subnet mask of 255.255.255.0. When done select OK all the way out.



9. Your network card is now configured with an alternative IP address of 10.0.0.200 which is in the same subnet of the MAPMINI controller 10.0.0.101.

- Wait for at least 1 minute before using the MAP1 IP Configuration Tool to scan for the controller and set it to a static IP address of your choice instead of the factory default static IP address.



## USB IP ADDRESS CONFIGURATION TOOL

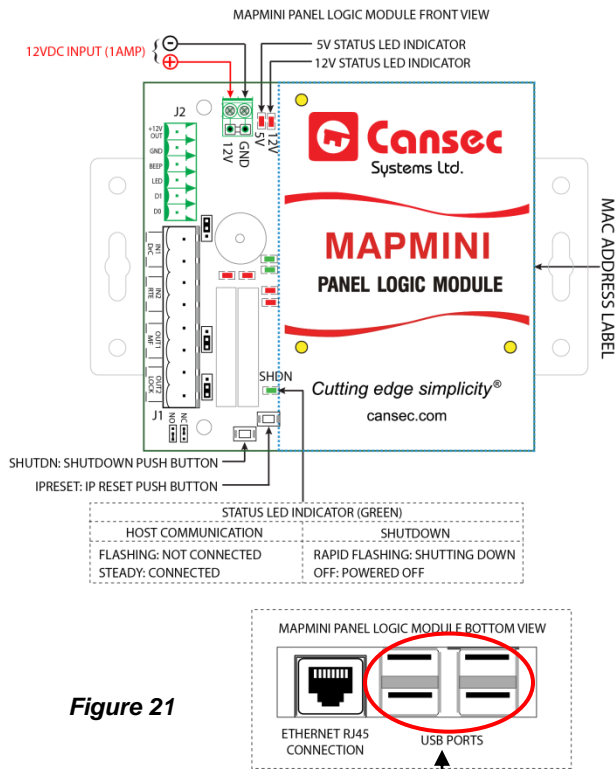



Figure 21

**Important:** Shutdown Push Button (SHUTDN) must be used to avoid data corruption on the MAPMINI controller.

To retrieve current configurations, insert a FAT32 formatted USB flash drive into one of the USB ports. Press shutdown button until a beep is heard then release shutdown button. Remove USB flash drive and review it from a computer.

Insert a FAT32 formatted USB flash drive into one of the USB ports



1. If the MAPMINI controller is already powered off then proceed to step 3. Otherwise, press and hold the SHUTDN button until the SHDN LED on the module begins flashing rapidly then release the SHUTDN button.
2. Wait until the MAPMINI does a complete shutdown, indicated by the SHDN LED turning OFF (except the power LED). Unplug the power connector.
3. Insert a FAT32 formatted USB flash drive into an available USB connector on the MAPMINI controller.
4. Insert the power connector into the MAPMINI controller. The unit will begin the power up sequence which takes about 30 to 40 seconds. When complete, the MAPMINI controller will emit a series of beeps, 1 beep, 2 beeps or 3 beeps to indicate its provisioned mode **First Access**, **Webster** or **CloudACS** respectively.
5. Remove the USB flash drive from the MAPMINI controller.
6. Insert the flash drive into a USB port on a computer. When ready, launch Windows Explorer or File Explorer. Access the USB drive and edit the file named MAPCFG.txt  
 created by the MAPMINI controller during boot-up sequence. If the file is not present, repeat from step 1. Otherwise proceed to step 7.
7. A similar file will be displayed when opened in Notepad.



```

MAPCFG - Notepad
File Edit Format View Help
;!!!!--> Model 3 <--!!!!!!!!!!!!!!!!!!!!!!!!!!!!!!!!!!!!!!!!!!!!!!!!!!!!!!!!!!!!!!
;NOTICE ---> DHCP IP configuration, Reconfigure to STATIC IP configuration
;
;   DHCP IP configuration :
;   Ip=172.15.30.101
;   NetMask=255.255.255.0
;   Gateway=172.15.30.1
;   DNS server 0.0.0.0
;   Ports are as indicated in the default Static IP config below
;
;EDIT Default Static IP configuration below
;
;!!!!!!!!!!!!!!!!!!!!!!!!!!!!!!!!!!!!!!!!!!!!!!!!!!!!!!!!!!!!!!!!!!!!!!!!!!!!!!
;
;-----
; Enter correct IP information below, then Delete the
; entire last line in this file, < USB INIT DONE >.
; This will force a re-configure using the new entered information.
; Caution: Do not add or delete any other lines
; Important : change entered password (Password cannot be Cansec)
;
;---> Current Default STATIC IP configuration from MAP1 SysCfg file information below:
;
[USBCFG]
Password=Cansec
Ip=0.0.0.0
NetMask=0.0.0.0
Gateway=0.0.0.0
SrvPort=5000
DiagPort=5001
UpdatePort=5002
HostPort=4070
Encryption=0
Authenticate=0
IpSecurity=0
ClientIp=0.0.0.0
HostName=cloudacs.com
HostRetryInterval=60
DhcpEnabled=1
Future=
< USB INIT DONE >

```

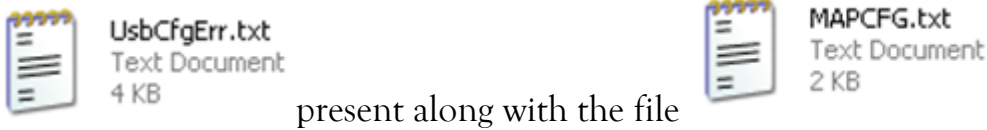
Figure 22

Key Section & Name	Value	Description
[USBCFG]	[USBCFG]	Key section – <b>DO NOT</b> change
Password	Cansec	Factory default password. Please modify to an appropriate password of your choice other than the default password.
IP	10.0.0.101	Factory default IP address. Please Specify the IP address of the host

		computer having the <b><i>First Access Express</i></b> software installed.
Netmask	255.255.255.0	Factory default subnet mask. Please specify the subnet mask where the host computer is connected to.
Gateway	10.0.0.1	Factory default gateway. Please specify the gateway where the host computer is connected to.
SrvPort	5000	Factory default-server port. It's suggested to leave it as default.
DiagPort	5001	Factory default-diagnostic port. It's suggested to leave it as default.
UpdatePort	5002	Factory default-update port. It's suggested to leave it as default.
Encryption	0	For future use only.
Authenticate	0	For future use only.
IpSecurity	0	Specify if trusted host is enabled or disabled. 1=enabled, 0=disabled
ClientIp	0.0.0.0	The IP address of the host computer having the <b><i>First Access Express</i></b> software installed. If IpSecurity is enabled and ClientIp has a valid IP address specified then the MAPMINI controller accepts data connection (SrvPort 5000) from only this host computer. Other connections on DiagPort 5001 and UpdatePort 5002 are not affected by this setting.
HostName	cloudacs.com	Applicable for Cloud based controller. The default hostname is cloudacs.com
HostRetryInterval	60	The default retry interval in seconds when the controller is disconnected from the CloudACS server
DhcpEnabled	1	DHCP is enabled by default
Future	blank	For future use only.
< USB INIT DONE >	< USB INIT DONE >	Please remove this line after this file has been correctly modified. The MAPMINI controller reads parameters in this file during boot up sequence and configures the IP

		address accordingly after which it will write <USB INIT DONE> to indicate that the initialization has been done.
--	--	--

8. Obtain all IP address information from IT personnel and modify the file accordingly. Remove the line <USB INIT DONE> and save the file before removing it from your computer.
9. Repeat from step 1 to step 6 then proceed to step 10.
10. Insert the flash drive into a USB port on a computer. When ready, launch Windows Explorer or File Explorer. Access the USB drive and check if there is an error file



present along with the file

11. If no error file is present, skip this step and proceed to step 12. Otherwise edit the error file and review the errors indicated. Correct the errors in the MAPCFG.txt accordingly and save it before removing it from the computer. Repeat step 1 to 6 then proceed to step 11. See sample error file.
12. If no error file is present, it's

```

UsbCfg MAP1 Startup
USBCFG, Version 1.0, 04-20-21 21:35:42
Mount point created --usbdrive --success
USBCFG, Version 1.0, 04-20-21 21:35:42
Drive mounted as usbdrive -- success
USBCFG, Version 1.0, 04-20-21 21:35:42
Static ip path -MAPCFG.txt found on USB drive --proceeding
USBCFG, Version 1.0, 04-20-21 21:35:42
Parsing data in MAPCFG.txt
USBCFG, Version 1.0, 04-20-21 21:35:42
< USB INIT DONE > not found
USBCFG, Version 1.0, 04-20-21 21:35:42
Parsing data in MAPCFG.txt
USBCFG, Version 1.0, 04-20-21 21:35:42
Reached End of Config data
USBCFG, Version 1.0, 04-20-21 21:35:42
MAPCFG.txt correct data
USBCFG, Version 1.0, 04-20-21 21:35:42
UpdatePort must be >1025 and < 65535
USBCFG, Version 1.0, 04-20-21 21:35:42
MAPCFG.txt range check error -- exiting
|

```

Figure 23




recommended that the file MAPCFG.txt be reviewed to ensure that the line <USB INIT DONE> has been written by the MAPMINI controller indicating that the IP configuration has been successfully saved and initialized.

13. A file named SysInf.txt is also present. This file contains critical information if debugging is required. If this file is not present it is recommended that the controller be updated with the latest firmware.

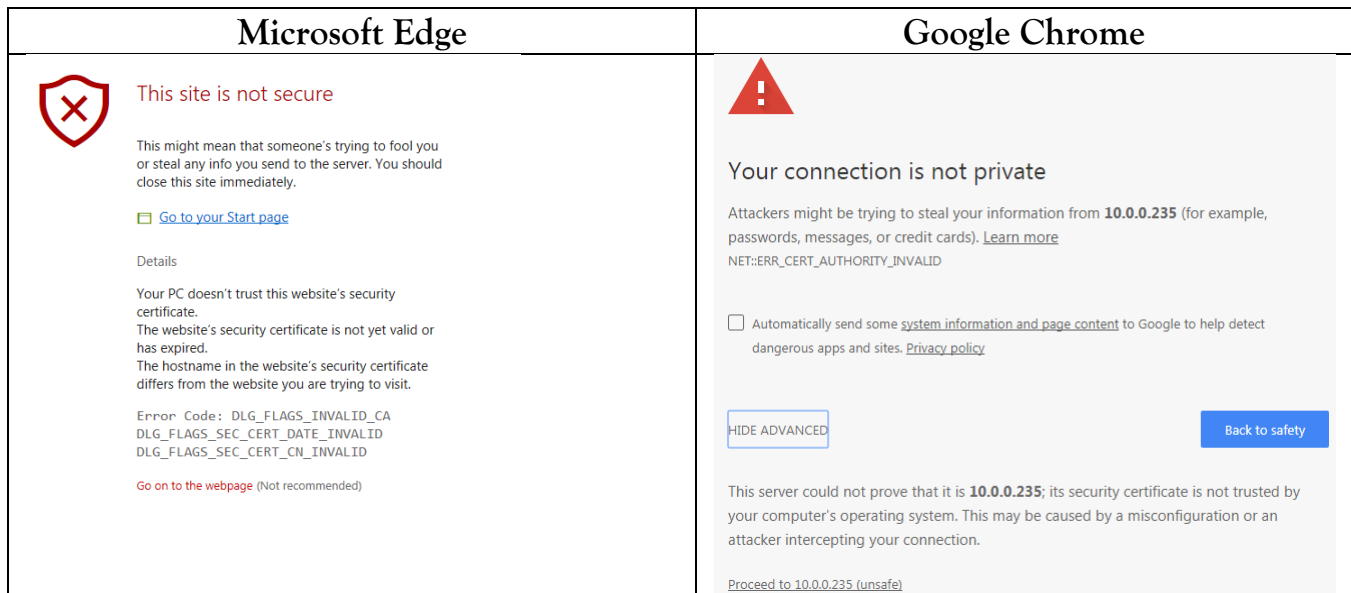
Ensure that your computer is on the same subnet of the controller

1. Launch a web browser and enter the static IP address of the MAPMINI controller.

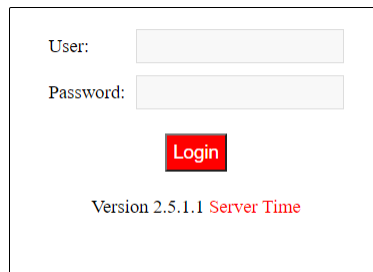
 http://10.0.0.235

Sample IP Address only. Enter your own assigned IP address

2. You will be prompted with a similar warning since it's a self-assigned certificate.



3. Ignore the warning. Click **Go on to the webpage** if your browser is Microsoft Edge. If your browser is Google Chrome, click **Proceed to x.x.x.x**, where x.x.x.x is the IP address of the MAPMINI controller.



The image shows a login form with two input fields: 'User:' and 'Password:'. Below the fields is a red 'Login' button. At the bottom of the form, it says 'Version 2.5.1.1 Server Time'.

4. Enter default user name **admin** and default password **admin** and click **Log In**. Password is case sensitive. Note: Administrator account can add/modify additional operator accounts and passwords from the **System Management** menu after logging in.

® Webster is a registered trademark of Cansec Systems Ltd.  
® Windows is a registered trademark of Microsoft Corporation in the United States and/or other countries.  
™ Chrome browser is a trademark of Google LLC in the United States and/or other countries.