

SmartLock® Pro Plus

ACCESS CONTROL SYSTEM



Simple Powerful Expandable

SmartLock® Pro Plus is a powerful and intuitive access control solution for up to 120 doors and 4800 users. It includes all the features and functionality required by system administrators, such as the ability to set Access Schedules, Access Profiles, Holidays, and Unlock Schedules. A comprehensive Task scheduler allows Reader, User, and Audit commands to be executed at a specified date and time or based on a recurring schedule. The included User Management module allows a second workstation to administer cardholders, while the Photo View module adds a layer of security by displaying user photos onscreen for access events.

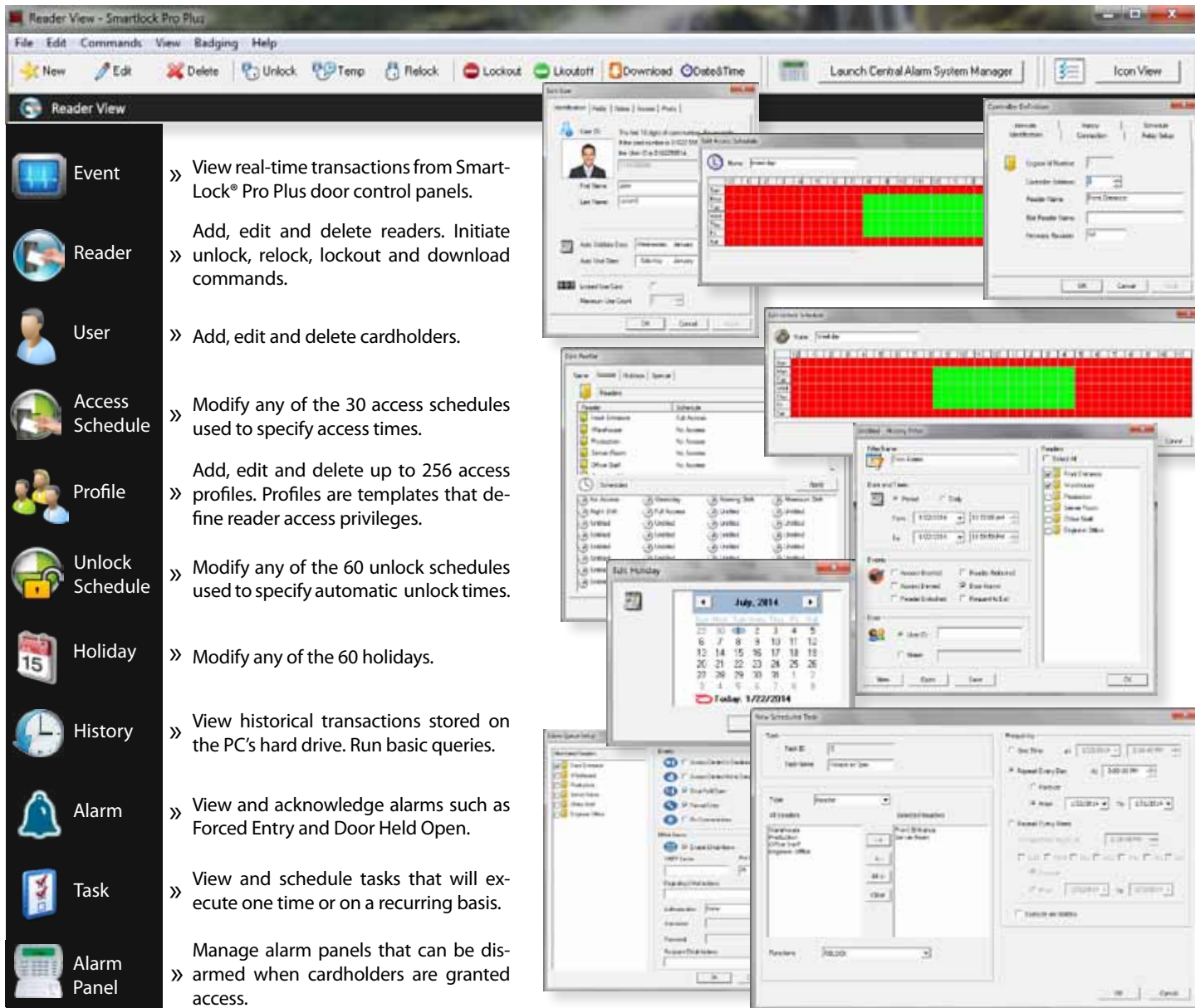
Additionally, SmartLock® Pro Plus can disarm DSC or Honeywell intrusion panels when an authorized credential is presented at a reader. Optional software allows for seamless DVR/NVR integration, Enhanced Attendance Reporting, and Photo Badge Integration with Asure ID.

SmartLock® Pro Plus

ACCESS CONTROL SYSTEM

SMARTLOCK® PRO PLUS SOFTWARE (CA-SLSWPP)

With a variety of scheduling, tracking and audit features, SmartLock® Pro Plus software makes security simple.



The screenshot displays the SmartLock Pro Plus software interface with a sidebar menu on the left and several overlapping windows on the right. The sidebar menu includes the following items:

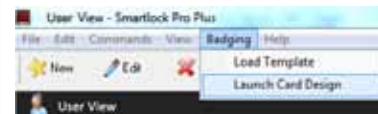
- Event**: View real-time transactions from SmartLock® Pro Plus door control panels.
- Reader**: Add, edit and delete readers. Initiate unlock, relock, lockout and download commands.
- User**: Add, edit and delete cardholders.
- Access Schedule**: Modify any of the 30 access schedules used to specify access times.
- Profile**: Add, edit and delete up to 256 access profiles. Profiles are templates that define reader access privileges.
- Unlock Schedule**: Modify any of the 60 unlock schedules used to specify automatic unlock times.
- Holiday**: Modify any of the 60 holidays.
- History**: View historical transactions stored on the PC's hard drive. Run basic queries.
- Alarm**: View and acknowledge alarms such as Forced Entry and Door Held Open.
- Task**: View and schedule tasks that will execute one time or on a recurring basis.
- Alarm Panel**: Manage alarm panels that can be disarmed when cardholders are granted access.

The background windows show various data entry and management screens, including user profiles, access schedules, and task configuration.

SMARTLOCK® PRO PLUS PHOTO BADGE INTEGRATION WITH ASURE ID (CA-SLSWPPB)

COMPATIBLE PRINTER LIST FOR SMARTLOCK® PRO PLUS PHOTO BADGING

- All FARGO DTC & HDP Printer/Encoders
- Datacard Card Printers
- Nisca Card Printers
- DIS Card Printers
- Zebra Card Printers
- Evolis Card Printers



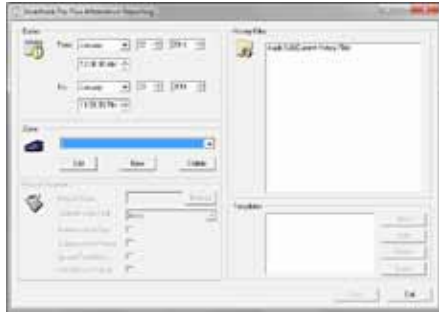
SmartLock® Pro Plus

ACCESS CONTROL SYSTEM

G OPTIONAL SOFTWARE ADD-ONS

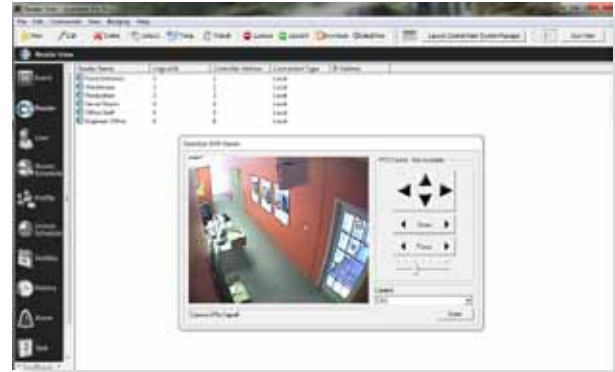
ENHANCED ATTENDANCE REPORTING (CA-ARSWP)

Enhanced Attendance Reporting software enables SmartLock® Pro Plus to generate reports based on zones that identify entry and exit points to a building or facility area and operator-specified dates and times. It allows the user to create Templates that can be used in the SmartLock® Pro Plus software to set up Tasks, allowing for scheduled, recurring report generation.

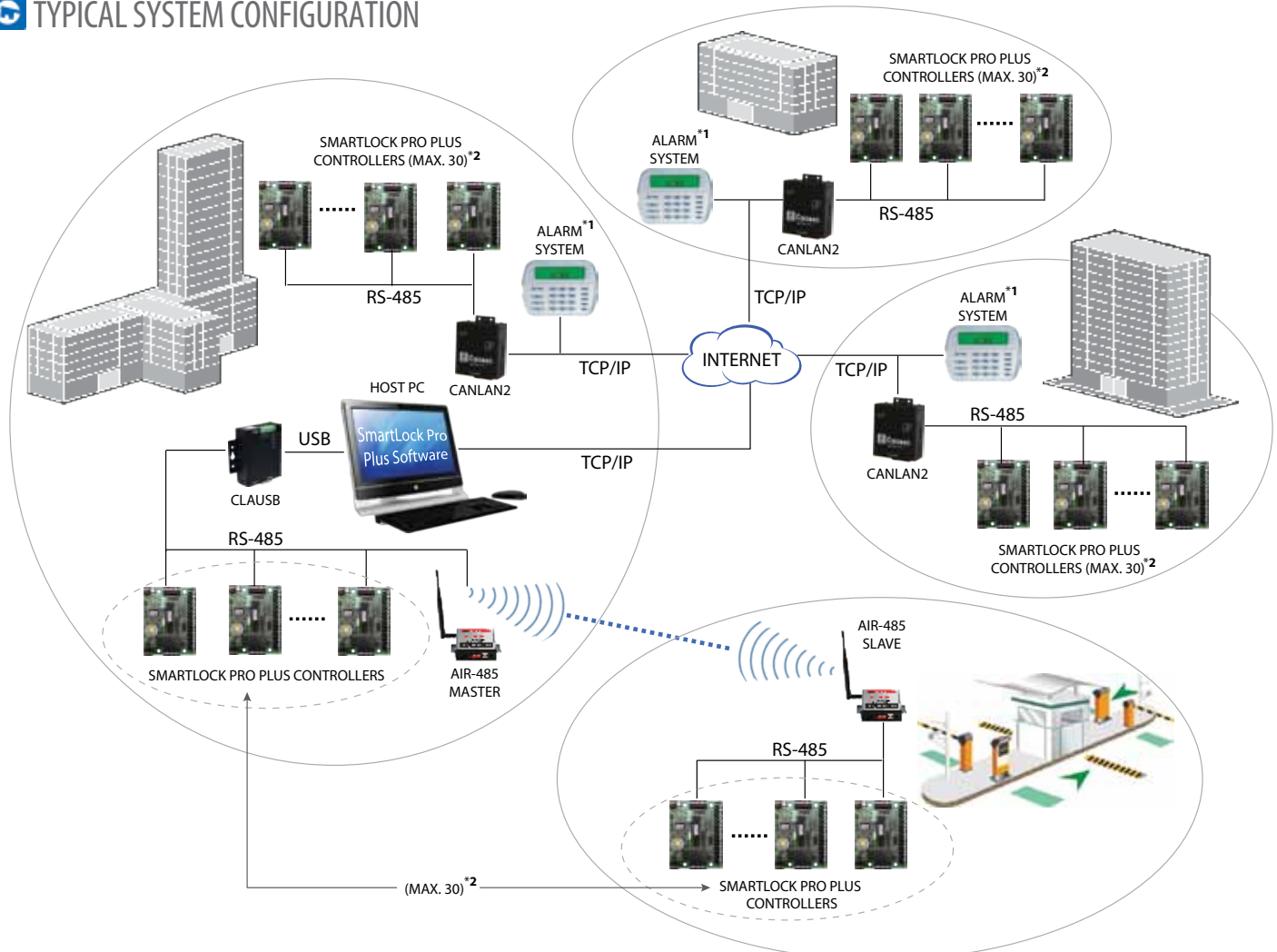


OPENEYE/PANASONIC DVR/NVR INTEGRATION

- OpenEye DVR for SmartLock® Pro Plus (CA-OESW)
- Panasonic ND300 NVR for SmartLock® Pro Plus (CA-PAND300SW)
- Panasonic ND400 NVR for SmartLock® Pro Plus (CA-PAND400SW)



G TYPICAL SYSTEM CONFIGURATION



NOTES:

1. SUPPORTS DSC POWERSERIES AND HONEYWELL VISTA SERIES ALARM SYSTEMS
2. MAX. 30 SMARTLOCK® PRO PLUS CONTROLLERS PER CLAU5B/CANLAN, **TOTAL MAX. 120 PRO PLUS CONTROLLERS PER SYSTEM**

SmartLock® Pro Plus

ACCESS CONTROL SYSTEM

FEATURES & BENEFITS

- Supports up to 120 doors and 4800 users
- Cost effective even for a one door system
- Configurable Alarm Queue
- Programmable Email Alerts
- MS Access or SQL Database
- Controllers can be connected RS-485 to USB using CLAUSB, RS-485 to TCP/IP using CanLan II, or wireless RS-485 using AIR-485
- Optional software for DVR/NVR integration, Enhanced Attendance Reporting, and Photo Badge Integration with Asure ID

NEW STANDARD FEATURES

NEW

DSC/Honeywell Intrusion Panel Integration

SmartLock Pro Plus can disarm a DSC or Honeywell intrusion panel when an authorized credential is presented at a reader.

Photo View

Displays cardholder photos when their card is used at all or selected readers.

Audit View

Allows users on remote computers to view the real time audit transactions.

User Management

Allows Personnel or Human Resources departments to add and delete users from the SmartLock Pro Plus system.

Momentary Unlock

Allows receptionists to momentarily unlock one or more selected reader equipped doors from any LAN connected computer to allow access to non-cardholders.

Please go to cansec.com for all available SmartLock Pro Plus door kits, and cansec.com/downloads for complete documentation, software and drivers.

SPECIFICATIONS (CONTROLLER)

Size	65 mm (W) x 85 mm (H) x 16 mm (D) [2.6 in (W) x 3.3 in (H) x 0.6 in (D)]
Weight	70 g (2.5 oz)
Operating Temperature	-35°C to 70°C (-22°F to 158°F)
Power Requirements	12 VDC, 50 mA (Controller only)
Warranty	5 years
Country of Origin / Manufactured	Canada

SMARTLOCK® PRO PLUS CONTROLLER

SmartLock® Pro Plus Controller

Supports a single door with Entry and Exit readers and up to 4800 users. Provides relay outputs for lock control, handicap door operator, and door-held-open/forced entry. Supports inputs for request-to-exit and door contact. All controller terminations are on detachable headers for ease of installation and service. Self-resetting fuses. Buffers up to 1,000 transactions. Requires 12 VDC. Includes push-in stand-offs.



CA-SLPCNPP

SmartLock® Enclosure

241 mm x 330 mm x 76 mm [9.5 in x 13 in x 3 in] metal enclosure with room for 1, 2 or 3 SmartLock Pro Plus controllers, Cansec power supply and 12V 7AH battery. Now comes with key lock and CanLan2 mounting location.



CA-SLBOX

COMMUNICATIONS DEVICES

CLAUSB Serial Communications Device

RS-485 to USB Converter.

Supports up to 30 SmartLock Pro Plus controllers.



CA-CLAUSB

CanLan II Network Communications Device

RS-485 to TCP/IP communications device. Includes plug-in power supply, UTP jack, and RS-485 output. *Static IP is required.*



CA-CANLAN2

Wireless AIR-485™ Communications Device

Wireless RS-485 communications device for use with most two-wire RS-485 products. AIR-485™ is perfect for installations where wired connections are cost-prohibitive. Configured using simple DIP switch settings.



CA-AIR485

