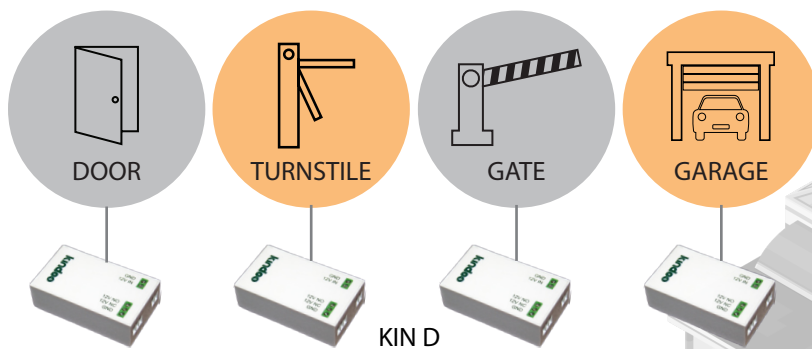


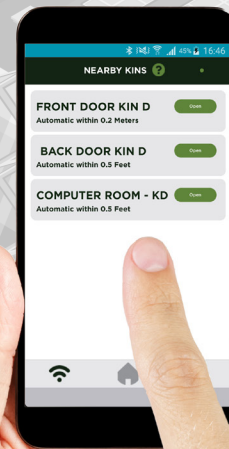
# KINDOO KIN D

Cutting edge simplicity®

## SMARTPHONE ACCESS CONTROL SYSTEM



SMARTPHONE  
KINDOO APP



**A complete access control system  
in the palm of your hand**

With the KINDOO smartphone app and the KIN D module, you can now have the benefits of a full-featured access control system without the associated cost or complexity.

The KINDOO app, available for iOS® and Android™ phones, allows you to easily add and delete users, modify access schedules and view audit reports. In addition, it allows you to use your phone as your access credential, allowing doors to be unlocked manually or automatically from up to 20 m (65 ft).

No network connection is required for the KIN D, making installation and setup extremely simple. No IT networking expertise required.

Each KIN D environment includes two free users. Additional users are purchased through the app and available immediately. Users can be purchased for a low monthly fee or a one time charge.

KINDOO Partners share in the user revenues and have access to an online portal which allows them to track their earned credential revenue in real time.



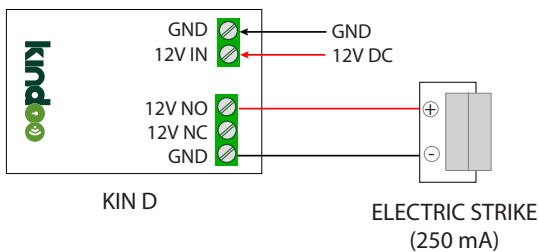
# KINDOO KIN D

## SMARTPHONE ACCESS CONTROL SYSTEM

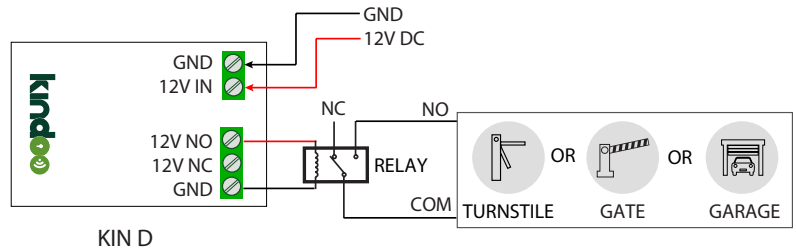
### FEATURES & BENEFITS

- Up to 20 m (65 ft) range
- Industry leading 256 bit encryption
- Bluetooth® low energy - 2.4 GHz frequency
- KINDOO app available for iOS® and Android™ phones\*
- Directly power low current 12 VDC electric strikes
- Simple integration with power door operators, gates and turnstiles with optional relay
- All functions controlled from the KINDOO smartphone app
- Add/delete users and control access rights
- Manage access schedules
- Review audit trail logs
- Grant access remotely
- Turn ON/OFF access events notifications
- Customize transaction messages
- Changes you make are effective immediately

### TYPICAL ELECTRIC STRIKE



### TYPICAL DRY CONTACT INTERFACE



### SPECIFICATIONS

<b>Size</b>	47.5 mm (W) x 26.5 mm (H) x 13.8 mm (D) [1.87 in (W) x 1.04 in (H) x 0.54 in (D)]
<b>Weight</b>	15 g [0.5 oz]
<b>Colour</b>	White
<b>Emission Range</b>	Up to 20 m [65 ft]
<b>Power Requirement</b>	12 VDC, 1.5 A Max
<b>KIN D Current Draw</b>	80 mA
<b>Available Current For Lock</b>	1 A
<b>Output Voltage</b>	12 VDC on NO/NC contacts
<b>Operating Temperature</b>	-40°C to 85°C [-40°F to 185°F]
<b>Frequency</b>	Bluetooth® low energy - 2.4 GHz
<b>Warranty</b>	1 year warranty



### PART NUMBER CA-KIN-D

\* Phone internet access is required when issuing a command

© 2010-2017 Cansec Systems Ltd. All rights reserved. Cansec®, CanProx®, and Cutting edge simplicity® are the registered trademarks of Cansec Systems Ltd. All other trademarks are the property of their respective owner.



Cansec Systems Ltd. | 3105 Unity Drive | Unit 9 | Mississauga | Ontario | L5L 4L2 | Canada

T (905) 820-2404 F (905) 820-0301 TF 1.877.545.7755

[cansec.com](http://cansec.com)